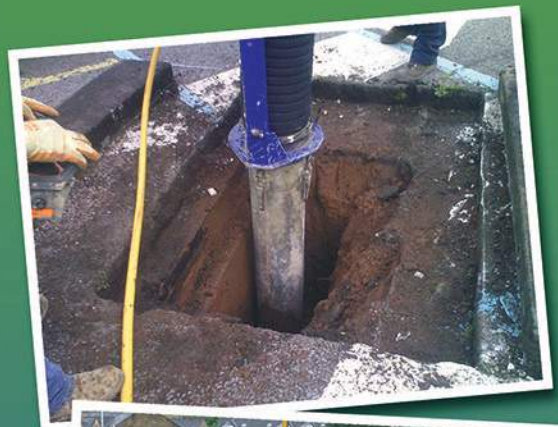


Suppliers of Specialist Equipment to the Utilities Sector



How does vacuum excavation work?

- 1.** Place the remote controlled boom over the area that requires excavation, around 6-8 inches above the material. Switch on the vacuum fans to start the suction process.
- 2.** As the material starts to make its way up the suction pipe, follow the material with the boom ensuring the 6-8 inch gap is maintained to allow for constant air flow.
- 3.** As the service becomes visible the material gets tougher, so the use of an air lance may be required to loosen the ground or clear the service.
- 4.** There are a selection of tools onboard to deal with various different conditions i.e. a narrow pipe size for restricted areas, air lance for loosening material and air breakers for breaking up the hard surface, all driven by a built in compressor.
- 5.** With our vast experience in the civils sector we can offer advice on other equipment or materials that may be required to complete the task safely, and can often assist with the temporary works.
- 6.** To support projects we can provide a full package i.e. supply of rubber mats for ground protection or panels to fence off the work area. Please ask for further information if you require any additional services.
- 7.** The material is stored in a built-in skip that is capable of holding up to 8m³. All excavated material is stock piled on site.
- 8.** The material is dispensed by lifting the lid upright, and side tipping the material to offload on to the ground. The material can also be tipped directly into de-mountable skips ready for removal from site to avoid reloading.
- 9.** Many contractors prefer the vacuum system when working in built up areas to ensure safe excavation around existing services and keep footpaths clear of material to prevent slips, trips and falls to the work force and general public. As well as being a much cleaner excavation process, the noise level of the equipment is under the legal requirement.
- 10.** To prevent any contamination in the air as the vacuum is created by air circulation, there is a filter system that consists of 42 filters. This ensures that no dust escapes into the atmosphere.



T: (01925) 228 674
E: info@pier-uk.co.uk
www.pier-uk.co.uk

Industry Leading Vacuum Excavation Equipment Providers

Adaptable accessories

For those restricted areas that are hard to get to due to tight access and recesses, the pipework can be extended from the wagon up to a length of 150 metres depending on the material.



Safety focused solutions

Vacuum excavation provides many great safety benefits over traditional, manual excavation techniques.

Reduced manual operation

With its extended reach and attachments, the vacuum excavator equipment means even the hardest to reach services no longer require manual digging.

Cleaner excavation

Dust captured inside the tank, low noise levels and less rubble build up ensures a safe working environment for on-site workers.

Technical training

Our vacuum excavation experts are extensively trained to use the equipment, with best practice on-site health & safety guidance. Equipment can be hired self-operated following detailed training by our specialist team.

For information on the most innovative excavator systems on the market, call on T: (01925) 228 674

Director's Statement

We aim to provide the best service we can to our customers by advising them on the most cost effective solutions to suit their needs.

We feel that we have an advantage over our competitors due to our combined experience in civil engineering, ground penetration radar equipment (GPR) and vacuum excavation systems.



All of our equipment is maintained by our in house maintenance team who are fully trained by the equipment manufacturers.

We have a continued expansion plan for fleet as we have made commitments to our suppliers with orders in place for the next twelve months.

Sean Quinn

Sean Quinn, Director



T: (01925) 228 674
E: info@pier-uk.co.uk
www.pier-uk.co.uk

Pier (UK) Limited
Unit 8, Sankey Valley Industrial Estate,
Earlestown, Newton-le-Willows, WA12 8DN